

# Pony Farm Fun and You're INVITED!

We are excited to offer these special seasonal weekends to our wonderful Pony Farm families and new folks as well. Join us to relax, rejuvenate, spend a fun time with family or friends and get away from the hectic pace of life. For those new to the farm, this is a great way to get a taste of Pony Farm. Get a group of friends to join you, have a blast bunking in together and enjoy a riding getaway. Take time to celebrate and enrich the wonderful bonds between family or friends. Or invite your grandmother or grandfather and celebrate a mini-family reunion as you savor the fun activities and beauty that New England has to offer people of all ages and interests. There is something for everybody to enjoy at Pony Farm.



**Fall Family Festival Weekend**

**Oct 30 – Nov 1**

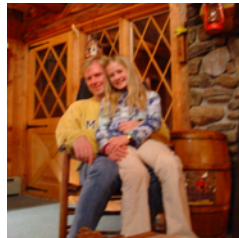
**Mother Daughter Holiday Weekend #1**

**Dec 4 – 6**

**Mother Daughter Holiday Weekend #2**

**Dec 12 – 14**

\*All weekends begin at 5 PM on Friday (or later, whenever you can get here) and go through lunch on Sunday, 1–2 PM.



The Lodge at Pony Farm also has a limited number of weekends available to book *your* special birthday, anniversary or family reunion celebration. Call for details.

Check out our NEW website at [www.ponyfarm.com](http://www.ponyfarm.com) for details, pictures and info on our Father Daughter and Spring 2009 Dates!!!

**pony Farm**

13 Pony Farm Lane, Temple NH 03084  
(603) 654-6308 [www.ponyfarm.com](http://www.ponyfarm.com)



**We offer a fabulous array of activities for everyone,  
from the more peaceful minded to those craving a touch of adventure.**

- ✦ Riding, in the ring, indoor arena, on the trail,  
in English or Western saddles, and lessons for those wanting  
to brush up their skills or try riding for the first time
  - ✦ Campfire with S'Mores and a Sing-along
  - ✦ Charades
  - ✦ Obstacle Course in the barn
  - ✦ Delicious home-cooked food
  - ✦ Massage (optional, extra fee, lic. Massage therapist)
  - ✦ Picture taking
  - ✦ Visit the local "antique trail" and find a treasure
  - ✦ Try tubing, sledding, snowshoeing or cross country skiing
- ✦ Trip to the scenic Wilton Falls
  - ✦ Small Animal Barn with furry buddies
  - ✦ Vaulting
  - ✦ Seasonal maple syrup tour
  - ✦ Driving buggies or sleighs, big horses  
or mini horses, learn to drive too!
  - ✦ Sit, relax, chat and enjoy the total  
absence of traffic, computers, cell  
phones, housework, home work...
  - ✦ Short or longer hikes in some of NH's  
beautiful scenery

**Fees:** \$325.<sup>00</sup> per person, includes 2 nights and all meals.  
Grandmothers, Grandfathers or a second daughter or son for any of the events are only \$225.00 each.

✉ Mail your application and fee to Pony Farm, 13 Pony Farm Lane, Temple, NH 03084. Thank You!!



**We want to come to Pony Farm for some fun!**

**2009**

**Name** \_\_\_\_\_ **Age** \_\_\_\_\_

**Name** \_\_\_\_\_ **Age** \_\_\_\_\_

**Name** \_\_\_\_\_ **Age** \_\_\_\_\_

**Address** \_\_\_\_\_

**City** \_\_\_\_\_ **State** \_\_\_\_\_ **Zip** \_\_\_\_\_ **Phone** \_\_\_\_\_

- Fall Family Festival Weekend: Oct 30 — Nov 1**
- Mother Daughter Holiday Weekend #1: Dec 4 — 6**
- Mother Daughter Holiday Weekend #2: Dec 12 — 14**

✉ Mail your application and fee to Pony Farm  
13 Pony Farm Lane, Temple, NH 03084. Thank You!!

**Fees:** \$325.<sup>00</sup> per person, includes 2  
nights and all meals.  
Grandmothers, Grandfathers or  
a second daughter or son only  
\$225.<sup>00</sup> each.